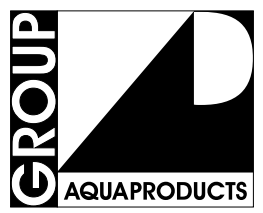
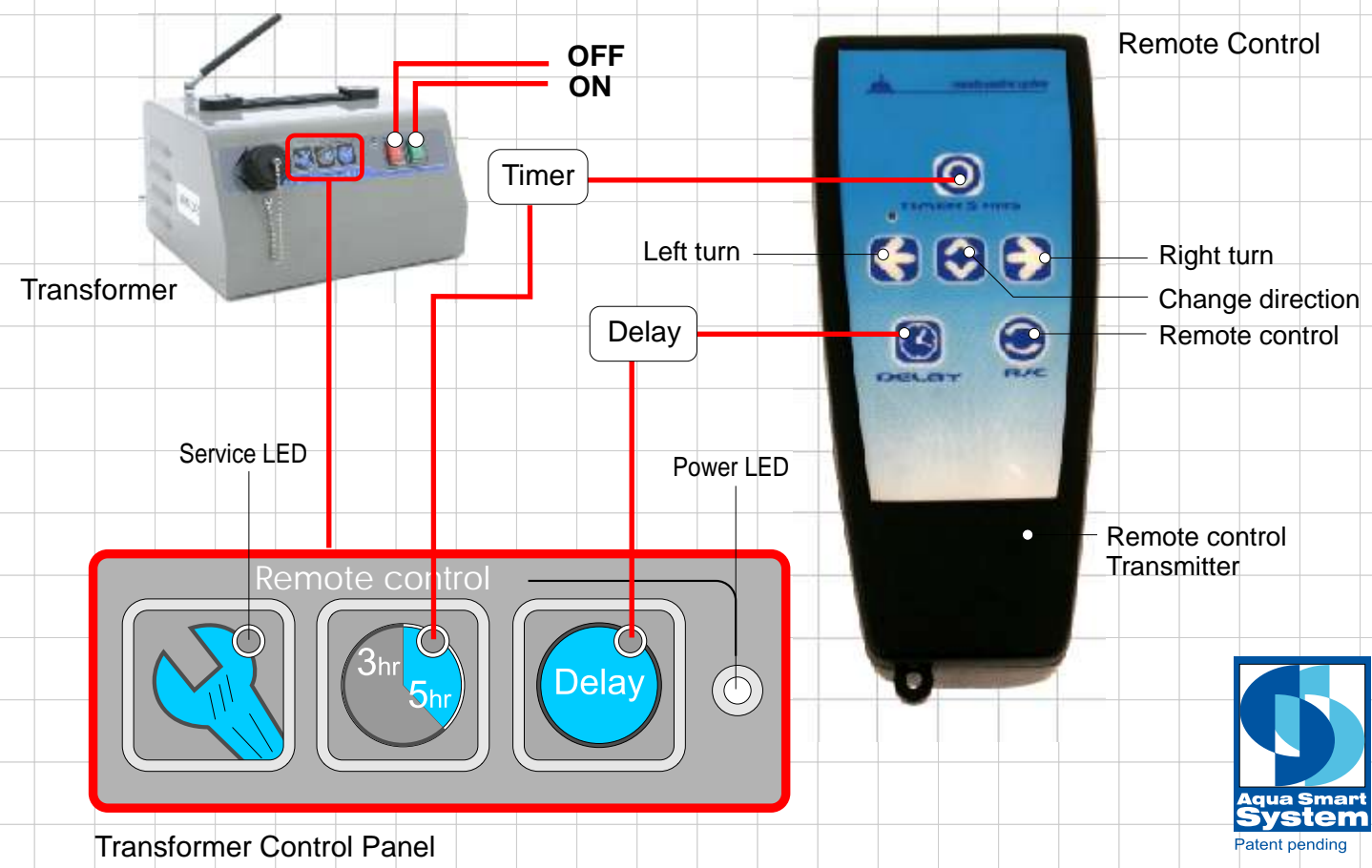




# 4 Cleaning Programs

commercial swimming pool cleaners



## AQUA PRODUCTS

The World's Leader In Commercial Pool Cleaning

25 RUTGERS AVENUE - CEDAR GROVE, NJ 07009  
www.AquaProducts.com / Commercial@AquaProducts.com  
Tel: 888-423-8152



**Gemini**, our newest wide body commercial pool cleaner, offers features and performance like no other cleaner on the market. Its modern styling and advanced 21st Century technology gives the Gemini the ability to clean any Olympic size or junior Olympic-size pool in as little as three hours. The key to Gemini's high-performance characteristics is our patented AquaSmart System™. The AquaSmart System is a unique electronic program linked to a sophisticated directional control mechanism. This combination of on-board computer and electro-mechanical design enables the Gemini to literally map any pool configuration to thoroughly and efficiently clean your aquatic facility in a measured, systematic manner that eliminates wasteful wear & tear overlapping cleaner motions. The result is a significant increase in reliability and cleaning accuracy. The Gemini is engineered to stand up to the most strenuous pool cleaning tasks. The result is a significant increase in reliability and performance. A stainless steel chassis and industrial drive belts, coupled with Gemini's standard zero-depth air sensor, wireless 4-directional radio remote control, infrared obstacle detection and Auto-Start Delay System make this unit the ultimate commercial pool cleaning system.

**STANDARD FEATURES INCLUDE:**

- Four Cleaning Programs To Choose From:
  - 3-Hr. Cleaning Cycle (Jr. Olympic or indoor pools)
  - 5-Hr. Cleaning Cycle (Olympic or outside pools)
  - 4-Directional Remote Control (manual "spot cleaning" operation)
  - Auto-Delay-Start (Innovative feature puts robot in stand-by mode for 2 hours allowing debris to settle to pool floor before commencing cleaning cycle)
- Stainless Steel chassis (this, the most durable frame of any cleaner maintains perfect mechanics, extending component life and insuring durability in heavily used commercial facilities)
- Air Detection Sensor (Automatically senses air and reverses cleaner back into pool in zero depth entries – i.e. beach entries, handicap ramps, etc. Shuts off cleaner when out of water for extensive period to protect from out of water operation and overheating)
- Infrared Obstacle Avoidance/Detection Sensor (Detects obstacles such as moveable bulkheads, tile walls and fountains avoiding wear and tear wall contact)

**ULTRA  
MAX  
GEMINI**

**Technical Specifications**

Calculated ground speed - 18 meter/min (70 ft / min)  
Calculated scanning rate - 865 m<sup>2</sup> / hr (9307 sqft / hr)

**Cleaning Programs:**

Four Cleaning Programs:  
-Automatic 3.5 Hours  
-Automatic 5 Hours  
-Wireless Remote Control  
-Delay - (switch the Robot to a "STAND-BY" mode for a period of 2 hours)

**Pumping Capacity**

(automatically controlled) - 166 gal / min (37.7 m<sup>3</sup> / hr)

**Filter Bag**

Filter area (2 filter bags) 16.6 ft<sup>2</sup> (15,500 cm<sup>2</sup>)  
Porosity -- 2 x reusable up to 2 micron

**Motor Unit**

Power consumption - 200W  
Voltage - 24V DC  
Current - 9 A

**Power Supply**

Input - 230 V / 50 Hz or ( special order ) 115 / 60 Hz  
Output - 36V DC (without load)  
Capacity - 380W

**Electronic Control**

Automatic shutdown

**Wireless Remote Control Unit**

Transmission up to - 98 ft. (30m)  
Batteries - 1 X 9V BATTERY  
Manual remote control programming.

**Dimensions & Weight**

Unit weight (without cable) - 45 lbs (20.4 Kg)  
Cable length - 150 ft (45m)  
Shipping weight 81.4 lbs. (37 kg.)  
Shipping weight including caddy, 114.2 lbs (51.8Kg)  
Shipping dimensions - 34.8 x 20.27 x 21.4 inch (88.5 x 51.5 x 54.5 cm.)



*All three units are delivered with a stainless steel Ultrakart.*

**Aquamax  
Magnum**

**Technical Specifications**

Calculated ground speed - 52.5 ft / min (16 meter/min)  
Calculated scanning rate - 2133 sqft / hr (650 m<sup>2</sup> / hr)

**Cleaning Programs:**

Four Cleaning Programs:  
-Automatic 3.5 Hours  
-Automatic 5 Hours  
-Wireless Remote Control  
-Delay - (switch the Robot to a "STAND-BY" mode for a period of 2 hours)

**Pumping Capacity**

(automatically controlled) - 72.18 gal / min (22 m<sup>3</sup> / hr)

**Filter Bag**

Filter area 12.4 ft<sup>2</sup> (11,520 cm<sup>2</sup>)  
Porosity -- reusable up to 2 micron

**Motor Unit**

Power consumption - 120W  
Voltage - 24V DC  
Current - 5 A

**Power Supply**

Input - 115V / 60 Hz 230 V / 50 Hz or ( special order )  
Output - 30V DC (without load)  
Capacity - 180W

**Electronic Control**

Automatic shutdown

**Wireless Remote Control Unit**

Transmission up to - 98 ft. (30m)  
Batteries - 1 X 9V BATTERY  
Manual remote control programming.

**Dimensions & Weight**

Unit weight (without cable) - 28.2 lbs (12.8 Kg.)  
Cable length - 120 ft (36m)  
Shipping weight 84 lbs.(35.18 kg.)  
Shipping weight including caddy, 90 lbs. (40.8 kg.)  
Shipping dimensions - 34.8 x 20.27 x 21.4 inch (88.5 x 51.5 x 54.5 cm.)



**Magnum** offers operators and maintenance personnel of mid-size commercial facilities (pools up to 80 feet in length) all of the advantages and operating features of the wide body Gemini, including Aqua Smart System™ guidance technology, in a more compact package.

**Magnum** incorporates all four of Gemini's optional cleaning programs, including wireless 4-directional Remote Control, and its smaller body size makes Magnum highly maneuverable for "spot cleaning" areas requiring additional attention.

**Aquamax  
Magnum  
JUNIOR**

**Technical Specifications**

Calculated ground speed - 52.5 ft / min (16 meter/min)  
Calculated scanning rate - 2133 sqft / hr (400 m<sup>2</sup> / hr)

**Cleaning Programs:**

Four Cleaning Programs:  
-Automatic 3.5 Hours  
-Automatic 5 Hours  
-Wireless Remote Control  
-Delay - (switch the Robot to a "STAND-BY" mode for a period of 2 hours)

**Pumping Capacity**

(automatically controlled) - 72.18 gal / min (22 m<sup>3</sup> / hr)

**Filter Bag**

Filter area 8.3 ft<sup>2</sup>(7,750 cm<sup>2</sup>)  
Porosity -- reusable up to 2 micron

**Motor Unit**

Power consumption - 120W  
Voltage - 24V DC  
Current - 5 A

**Power Supply**

Input - 115 / 60 Hz 230 V / 50 Hz or ( special order )  
Output - 30V DC (without load)  
Capacity - 180W

**Electronic Control**

Automatic shutdown

**Wireless Remote Control Unit**

Transmission up to - 98 ft. (30m)  
Batteries - 1 X 9V BATTERY  
Manual remote control programming.

**Dimensions & Weight**

Unit weight (without cable) - 22.5 lbs (10.2 Kg.)  
Cable length - 100 ft (30m)  
Shipping weight 56 lbs. (24.6 kg.)  
Shipping weight including caddy, 84.2 lbs. (38.2 kg.)  
Shipping dimensions - 34.8 x 20.27 x 21.4 inch (88.5 x 51.5 x 54.5 cm.)